

## Product information

The new **Gaston GT-HR** range of valve regulated lead acid batteries has been designed to offer a superior solution for the information technology and uninterruptable power supply markets.

**Gaston GT- HR** is the ideal source of power to protect vital systems. By design, the **Gaston GT-HR** battery not only offers Gaston`s unsurpassed reputation for excellence, but also improves upon recognized industry standards for performance by weight and volume.

Design specification criteria also enable **Gaston GT- HR** to be used in other more traditional such as Engine Start and Emergency Lighting.

In critical standby power applications, maximum battery life is essential. Gaston brand HIGH RATE Batteries have been specifically designed for maximum life to comply with rigorous industry standards. This is achieved utilizing computer modeling, proper component materials selection and overall design criteria, as well as state-of-the-art automated manufacturing techniques. This has been validated through extensive life-cycle testing as well as years of in-service life in UPS applications.

Gaston High rate product features:

- Thermally welded case-to-cover bond to eliminate leakage
- Absorbent Glass Mat (AGM) technology for efficient gas recombination of up to 99% and freedom from electrolyte maintenance
- Computer-generated grid design optimized for high power density
- UL-recognized component
- Multicell design for economy of installation and maintenance
- Computer designed lead, low calcium alloy grid for minimal gassing and ease of recycling
- Can be used in any orientation. Upright, side or end mounting recommended
- UL-recognized component
- Multicell design for economy of installation and maintenance

## Applications

GASTON High rate range batteries incorporate advanced VRLA technology designed for high performance in:

### Telecommunications

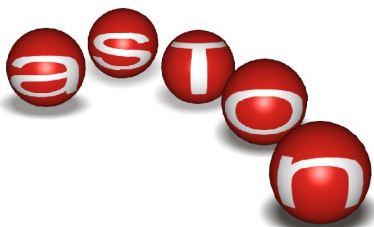
- Distributed power
- purchase
- Cellular
- Broadband

### Electric Utility

- Switchgear control power
- Communications

### UPS

## HighRate GT-HR Range



## Features and Benefits

Computer-generated grid design optimized for high power density  
 Computer designed lead, low calcium alloy grid for minimal gassing and ease of recycling  
 Can be used in any orientation.  
 Upright, side or end mounting recommended UL-recognized component

## Installation

Easy access to installation and maintenance  
 Vertical or horizontal position.  
 In cabinets or on stands(metal or wood)close to the point of use.  
 No separate battery room necessary

## Reduced Maintenance

No water addition

## Standards

IEC 896 Part 2  
 BS 6290 Part 4  
 CEI en 60896-2

## Flame retardant construction for optimum safety(optional)

Meet UI94 V-0,28% L.O.I.

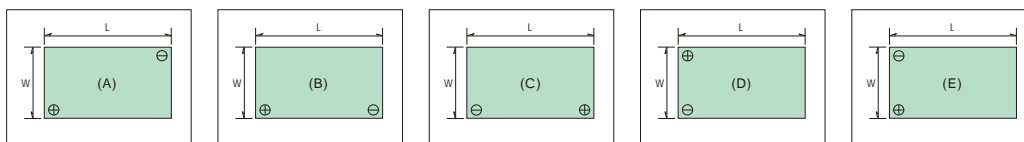
## Technical characteristics per cell

Type	Nominal Voltage(V)	Capacity(Ah)@ 20°C			Dimensions in millimeters			Typical Weight (kg)	Terminal type position	Terminal
		Power in watts per cell	C <sub>20</sub> to 1.75Vpc	Length	Width	Overall Height				
GT 6-5HR	6	16	5	70	47	106	0.9	A	T1,T2	
GT 12-5HR	12	16	5	90	70	106	1.9	B	T1,T2	
GT 12-7HR	12	28	8	151	65	101	2.6	D	T1,T2	
GT 12-9HR	12	30	9	151	65	101	2.8	D	T1,T2	
GT 12-12HR	12	43	12	151	98	101	4.0	D	T3	
GT 12-18HR	12	68	18	181	76	167	6.1	C	T3	
GT 12-26HR	12	108	26	166	175	125	8.8	C	T3	
GT 12-33HR <sup>(1)</sup>	12	140	33	197	132	187	12	B	T4,T5	
GT 12-40HR	12	150	40	197	165	170	15	C	T3	
GT 12-50HR <sup>(1)</sup>	12	170	50	228	139	225	18	B	T4,T5	
GT 12-55HR <sup>(1)</sup>	12	200	55	228	139	225	18	B	T4,T5	
GT 12-75HR <sup>(1)</sup>	12	270	75	261	173	224	26	B	T4,T5	
GT 12-90HR <sup>(1)</sup>	12	310	90	306	173	230	30	B	T4,T5	
GT 12-100HR <sup>(1)</sup>	12	370	100	341	173	241	34	B	T4,T5	
GT 12-100M <sup>(2)</sup>	12	280	100	406	173	238	36	C	T4,T5	
GT 12-200M <sup>(2)</sup>	12	553	200	498	259	238	74.5	E	T4,T6	

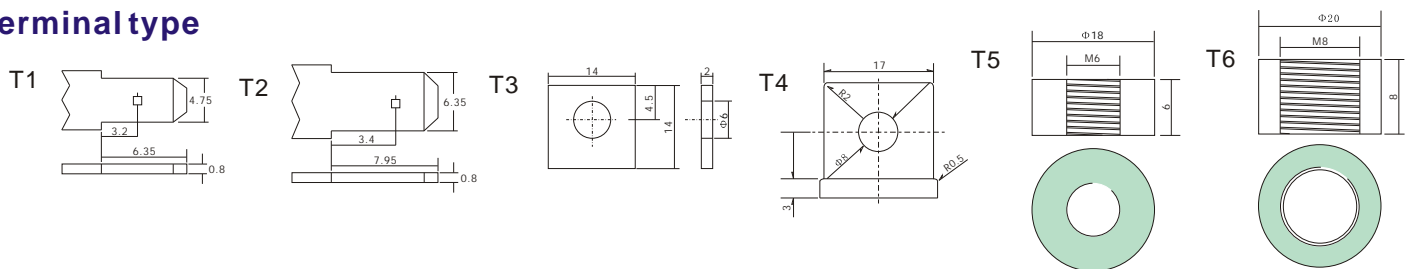
<sup>(1)</sup> With lifting handles

<sup>(2)</sup> 10 year design life@25°C(77°F)

## Terminal position



## Terminal type



## GASTON BATTERY INDUSTRIA LTD

Add: 7/F,Blk B, Edwick ind Centre, 30lei Muk Rd.,  
 Kwai Chung, HongKong.  
 Tel: (852)24477507 Fax: (852)26172465  
 E-mail: gaston@gaston.com.hk  
 Website: <http://www.gaston.com.hk>

## GASTON BATTERY INDUSTRIA LTD SHENZHEN OFFICE

Add: rm1913-1914, BLK.B, jingtong Building  
 Number 1058 Aiguo Rd., ShenZhen,  
 Guangdong, P.R.China  
 Tel: 86-755-25680676 Fax: 86-755-25411738  
 E-mail: [gaston@netvigator.com](mailto:gaston@netvigator.com)

## Discharge data (Amperes,25°C)

Battery Model	End Voltage (V)	Discharge characteristics (Amperes,25°C)									
		5Min	10Min	15Min	30Min	1h	2h	3h	5h	10h	20h
GT6-5HR	5.10	22.1	14.6	11.2	5.99	3.88	1.99	1.16	0.82	0.46	0.26
	5.25	20.7	14.1	10.8	5.68	3.70	1.93	1.13	0.80	0.46	0.26
	5.40	19.3	13.4	9.95	5.27	3.47	1.88	1.08	0.74	0.44	0.25
	5.55	17.9	12.7	9.46	5.12	3.30	1.80	1.02	0.71	0.42	0.24
GT12-5HR	10.2	22.1	14.6	11.2	5.99	3.88	1.99	1.16	0.82	0.46	0.26
	10.5	20.7	14.1	10.8	5.68	3.70	1.93	1.13	0.80	0.46	0.26
	10.8	19.3	13.4	9.95	5.27	3.47	1.88	1.08	0.74	0.44	0.25
	11.1	17.9	12.7	9.46	5.12	3.30	1.80	1.02	0.71	0.42	0.24
GT12-7HR	10.2	28.3	19.0	14.6	8.47	5.50	2.92	1.93	1.34	0.78	0.40
	10.5	27.8	18.4	14.2	8.05	5.23	2.80	1.87	1.31	0.76	0.40
	10.8	27.3	17.8	13.8	7.65	4.99	2.68	1.81	1.28	0.74	0.40
	11.1	24.3	17.0	12.5	7.08	4.67	2.58	1.75	1.20	0.72	0.39
GT12-9HR	10.2	35.7	22.9	17.7	10.0	6.50	3.60	2.23	1.57	0.87	0.45
	10.5	33.8	22.2	17.0	9.50	6.20	3.50	2.19	1.53	0.86	0.45
	10.8	30.2	21.1	15.6	8.80	5.80	3.40	2.09	1.44	0.85	0.44
	11.1	27.0	20.1	14.3	8.16	5.43	3.30	2.03	1.40	0.83	0.43

Battery Model	End Voltage (V)	Discharge characteristics (Amperes,25°C)									
		5Min	10Min	15Min	30Min	1h	2h	3h	5h	10h	20h
GT12-12HR	10.2	49.7	34.3	24.0	13.2	8.55	4.53	3.17	2.21	1.25	0.67
	10.5	47.1	30.2	23.3	12.5	8.15	4.41	3.08	2.16	1.23	0.66
	10.8	44.6	26.6	22.6	11.8	7.76	4.28	2.99	2.11	1.21	0.65
	11.1	41.0	27.9	20.6	11.0	7.27	4.15	2.86	1.98	1.19	0.64
GT12-18HR	10.2	67.0	43.0	32.2	18.6	12.4	6.28	4.41	3.08	1.71	0.90
	10.5	63.5	41.8	31.5	17.8	11.7	5.97	4.28	3.01	1.68	0.90
	10.8	60.2	40.6	30.8	17.0	11.0	5.77	4.15	2.94	1.65	0.90
	11.1	55.9	38.3	28.9	16.0	10.3	5.65	3.98	2.75	1.60	0.88
GT12-26HR	10.2	93.0	55.9	42.6	25.2	17.8	9.13	7.66	4.24	2.36	1.30
	10.5	87.0	54.1	40.8	23.8	17.1	8.93	7.47	4.21	2.35	1.30
	10.8	81.9	52.3	39.1	22.5	16.4	8.82	7.28	4.18	2.34	1.30
	11.1	76.0	48.8	32.3	21.1	16.2	8.72	7.08	3.88	2.22	1.28
GT12-33HR	10.2	102	72.9	56.9	35.4	21.0	12.3	8.93	5.87	3.46	1.80
	10.5	92.2	67.7	54.1	34.4	20.7	11.6	8.71	5.77	3.30	1.75
	10.8	83.5	62.9	51.4	33.4	20.4	11.1	8.50	5.67	3.15	1.70
	11.1	60.0	48.5	41.2	30.9	19.1	10.7	8.19	5.35	2.94	1.52

## Discharge data (Amperes,25°C)

Battery Model	End Voltage (V)	Discharge characteristics (Amperes,25°C)									
		5Min	10Min	15Min	30Min	1h	2h	3h	5h	10h	24h
GT12-40HR	10.2	119	86.7	67.6	44.4	26.4	15.2	10.8	7.32	4.00	1.93
	10.5	109	80.6	64.3	42.0	25.6	14.4	10.6	7.16	3.78	1.74
	10.8	99.1	74.9	61.2	39.7	24.8	13.8	10.4	7.00	3.57	1.57
	11.1	80.0	65.0	55.0	36.8	23.5	13.3	9.80	6.40	3.45	1.50
GT12-50HR	10.2	161	114	90.4	56.2	32.7	18.1	14.1	9.30	5.61	2.50
	10.5	146	107	85.9	54.6	32.4	17.6	13.8	9.10	5.30	2.40
	10.8	132	100	81.6	53.0	32.1	16.6	13.5	8.90	5.00	2.30
	11.1	95.1	77.1	65.3	48.8	30.1	15.8	12.9	8.50	4.70	2.24
GT12-55HR	10.2	169	119	95.7	60.8	32.7	19.0	14.9	9.30	5.61	2.50
	10.5	153	112	90.2	57.3	32.4	18.5	14.2	9.10	5.30	2.40
	10.8	138	105	85.0	54.0	32.1	17.4	13.5	8.90	5.00	2.30
	11.1	99.8	80.8	68.3	50.8	30.0	16.6	12.9	8.50	4.70	2.24
GT12-75HR	10.2	208	149	116	78.7	46.2	28.5	18.2	12.8	7.67	3.35
	10.5	189	139	111	73.5	44.8	26.9	18.2	12.5	6.83	3.18
	10.8	171	129	106	68.6	43.4	25.8	18.2	12.2	6.08	2.98
	11.1	124	100	88.0	64.4	41.3	24.8	17.1	11.2	5.75	2.73
GT12-90HR	10.2	278	195	155	101	59.4	35.9	23.8	16.5	9.41	4.48
	10.5	246	180	145	94.5	57.6	34.0	23.6	16.1	9.10	4.18
	10.8	217	166	135	88.2	55.8	32.5	23.4	15.7	8.80	4.10
	11.1	180	142	123	82.8	53.1	32.1	22.0	14.4	8.50	3.98
GT12-100HR	10.2	307	217	172	112	66.1	36.1	27.0	18.3	10.4	4.80
	10.5	273	200	161	105	64.0	35.3	26.5	17.9	10.2	4.50
	10.8	242	184	150	98.0	62.0	34.1	26.0	17.5	10.0	4.20
	11.1	200	158	137	92.0	59.0	33.2	24.0	16.0	9.40	4.10

Battery Model	End Voltage (V)	Discharge characteristics (Amperes,25°C)									
		5Min	15Min	30Min	1h	2h	3h	5h	10h	20h	24h
GT12-100M	10.2	298	162	101	62.0	44.5	26.0	19.0	10.7	5.50	4.80
	10.5	266	150	98.0	60.0	42.0	25.0	18.5	10.5	5.30	4.60
	10.8	240	142	95.0	55.0	40.0	24.0	18.0	10.0	5.00	4.50
	11.1	212	133	90.0	50.0	37.5	23.0	17.6	9.60	4.70	4.20
GT12-200M	10.2	598	324	202	124	89.0	52.0	38.0	21.5	11.0	9.70
	10.5	532	300	196	120	84.0	50.0	37.0	21.0	11.5	10.6
	10.8	480	284	190	110	80.0	48.0	36.0	20.0	10.0	9.00
	11.1	424	266	180	100	75.0	46.0	35.2	19.2	9.50	8.50

## Discharge data (Watts/Cell,25°C)

Battery Model	End Voltage per cell	Discharge characteristics (Watts/Cell,25°C)									
		5Min	10Min	15Min	30Min	45Min	1h	2h	3h	5h	10h
GT6-5HR	1.67	40.6	27.6	21.3	12.9	8.18	6.73	4.03	2.56	1.85	0.83
	1.70	39.7	27.0	20.8	12.6	8.00	6.58	3.93	2.51	1.81	0.81
	1.75	38.4	26.8	20.5	12.0	7.72	6.49	3.84	2.48	1.76	0.78
	1.80	36.6	26.0	19.2	11.4	7.41	6.11	3.70	2.40	1.70	0.76
GT12-5HR	1.67	40.6	27.6	21.3	12.9	8.18	6.73	4.03	2.56	1.85	0.83
	1.70	39.7	27.0	20.8	12.6	8.00	6.58	3.93	2.51	1.81	0.81
	1.75	38.4	26.8	20.5	12.0	7.72	6.49	3.84	2.48	1.76	0.78
	1.80	36.6	26.0	19.2	11.4	7.41	6.11	3.70	2.40	1.70	0.76
GT12-7HR	1.67	55.8	38.0	29.3	17.2	12.2	10.7	6.03	4.41	2.88	1.28
	1.70	54.4	37.1	28.6	16.8	11.9	10.4	5.88	4.30	2.81	1.25
	1.75	52.7	36.8	28.3	16.1	11.5	10.3	5.72	4.16	2.74	1.22
	1.80	50.1	35.7	26.3	14.8	11.1	10.1	5.52	4.02	2.64	1.18
GT12-9HR	1.67	67.9	44.7	34.5	19.5	15.9	12.0	7.18	4.52	3.22	1.43
	1.70	66.2	43.6	33.7	19.0	14.2	11.7	7.00	4.41	3.14	1.40
	1.75	64.3	43.3	33.3	18.5	13.7	11.5	6.82	4.40	3.12	1.38
	1.80	59.0	42.0	31.0	17.5	13.2	10.8	6.58	4.22	2.97	1.32
GT12-12HR	1.67	85.3	56.3	43.5	24.2	18.3	15.5	9.04	6.60	4.32	1.92
	1.70	83.2	54.9	42.4	23.6	17.9	15.1	8.82	6.44	4.22	1.86
	1.75	81.1	54.6	42.0	22.9	17.3	14.5	8.60	6.25	4.11	1.83
	1.80	76.4	52.9	39.1	22.1	16.6	13.7	8.30	6.03	3.96	1.76
GT12-18HR	1.67	122	82.5	62.6	36.7	28.9	22.4	14.2	8.75	6.45	2.87
	1.70	119	80.5	61.1	35.8	28.2	21.9	13.9	8.54	6.30	2.80
	1.75	111	78.6	60.6	34.9	27.3	21.6	13.6	8.43	6.24	2.77
	1.80	104	71.6	57.7	33.8	26.4	20.5	13.2	8.18	6.00	2.67
GT12-26HR	1.67	176	116	90.4	50.0	35.1	27.6	18.0	13.2	8.65	3.85
	1.70	172	113	88.2	48.8	34.2	26.9	17.6	12.9	8.44	3.75
	1.75	158	111	87.2	48.3	34.1	26.8	17.2	12.5	8.21	3.65
	1.80	135	100	84.5	47.3	33.6	26.3	15.6	12.1	7.92	3.52

Battery Model	End Voltage per cell	Discharge characteristics (Watts/Cell,25°C)									
		5Min	10Min	15Min	30Min	1h	2h	3h	5h	10h	24h
GT12-33HR	1.67	260	180	140	86.0	50.0	33.0	19.0	12.3	7.10	3.15
	1.70	256	175	138	85.0	50.0	33.0	18.5	11.7	6.70	2.98
	1.75	250	170	135	84.0	49.0	32.0	18.0	11.5	6.50	2.95
	1.80	235	155	120	80.0	46.0	30.0	17.0	10.8	6.05	2.73

## Discharge data (Watts/Cell,25°C)

Battery Model	End Voltage per cell	Discharge characteristics (Watts/Cell,25°C)									
		5Min	10Min	15Min	30Min	1h	2h	3h	5h	10h	24h
GT12-40HR	1.67	270	185	150	88.0	52.0	34.0	20.5	13.5	7.62	3.41
	1.70	256	155	125	83.0	46.5	32.3	19.4	11.7	7.25	3.25
	1.75	250	145	118	78.0	46.2	31.6	19.1	11.5	7.14	3.20
	1.80	235	138	110	75.0	42.9	31.0	18.5	10.8	6.72	3.05
GT12-50HR	1.67	280	210	170	107	66.0	38.0	27.0	17.8	10.5	4.50
	1.70	270	204	165	105	65.0	36.0	26.6	17.5	10.4	4.40
	1.75	250	190	155	100	62.0	34.5	26.2	17.1	9.80	4.30
	1.80	240	185	150	95.0	60.0	33.0	25.3	16.5	9.50	4.25
GT12-55HR	1.67	370	255	203	125	74.0	43.0	29.0	19.2	10.8	4.85
	1.70	360	251	200	123	72.0	41.5	28.7	19.0	10.6	4.80
	1.75	335	240	194	120	70.0	40.0	28.1	18.7	10.5	4.73
	1.80	320	233	188	117	68.0	39.0	27.7	18.3	10.4	4.70
GT12-75HR	1.67	524	361	282	176	104	54.0	35.7	23.5	13.2	6.10
	1.70	512	356	279	175	103	52.0	35.1	23.1	13.0	6.02
	1.75	484	342	270	171	102	51.0	34.8	22.9	12.9	5.95
	1.80	463	326	260	165	100	48.5	34.2	22.7	12.8	5.84
GT12-90HR	1.67	608	423	330	205	120	69.0	47.7	30.9	17.6	7.80
	1.70	591	415	325	203	119	68.0	47.1	30.5	17.4	7.72
	1.75	555	397	314	199	118	67.0	46.5	30.1	17.2	7.66
	1.80	510	375	300	194	116	65.0	45.8	29.7	17.0	7.63
GT12-100HR	1.67	714	505	391	237	136	74.0	52.6	34.8	19.6	8.81
	1.70	700	496	386	235	135	72.7	52.0	34.3	19.3	8.70
	1.75	662	475	372	229	133	69.0	51.3	33.9	19.1	8.60
	1.80	619	451	358	220	130	66.7	50.6	33.4	18.8	8.58

Battery Model	End Voltage per cell	Discharge characteristics (Watts/Cell,25°C)									
		5Min	15Min	30Min	1h	2h	3h	5h	8h	10h	24h
GT12-100M	1.65	531	276	174	109	71	45.5	33.8	23.0	19.2	9.00
	1.70	509	276	172	108	69	44.8	33.4	22.5	19.0	9.00
	1.75	474	267	171	107	68	44.5	32.9	22.2	18.7	9.00
	1.80	432	256	170	100	67	43.2	32.3	21.7	18.0	8.94
GT12-200M	1.67	1063	553	347	173	142	90.7	67.4	46.0	38.4	18.0
	1.70	1017	551	344	215	139	89.7	66.7	45.0	38.0	18.0
	1.75	947	534	343	214	137	89.0	65.7	44.4	37.4	18.0
	1.80	864	511	342	198	135	86.5	64.8	43.4	36.0	17.9